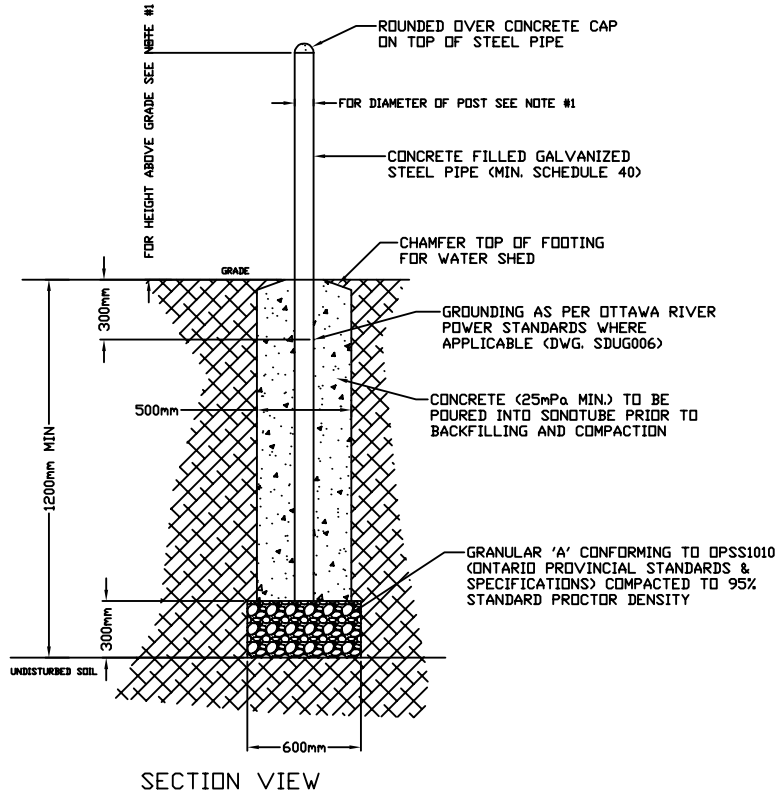
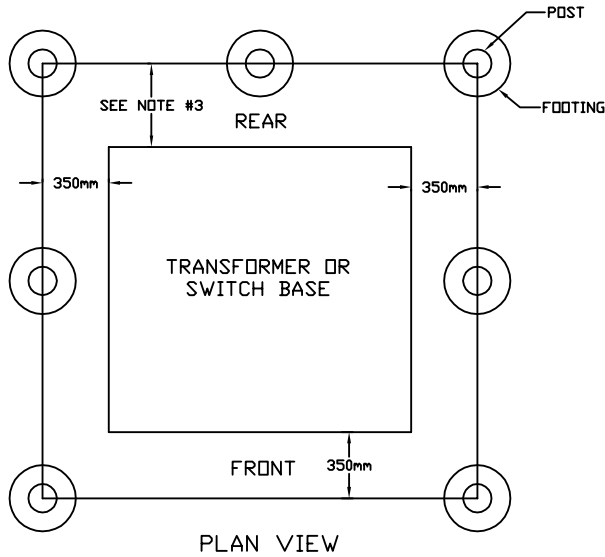


DESCRIPTION



SECTION VIEW



NOTE

1. PROTECTIVE BOLLARD DIMENSIONS:
 -FOR SINGLE PHASE TRANSFORMER BASE
 HEIGHT 900mm DIAMETER 100mm
 -FOR THREE PHASE TRANSFORMER BASE
 HEIGHT 1200mm DIAMETER 150mm
2. FOUR BOLLARDS REQUIRED UNLESS OTHERWISE STATED IN DESIGN
3. REAR POST OFFSET FROM BASE:
 -FOR SINGLE PHASE TRANSFORMER BASE
 OFFSET 380mm
 -FOR THREE PHASE TRANSFORMER BASE AND SWITCH
 OFFSET 460mm

	OTTAWA RIVER POWER CORPORATION		
	PROTECTIVE BOLLARD INSTALLATION TRANSFORMER AND SWITCH BASE		
DWN. ALEX REAVIE	DWG NO.	SDUG008	REV 0
APP. DOUG FEE P. ENG.	SCALE	1:40	SHEET
DATE JUNE 9, 2006			