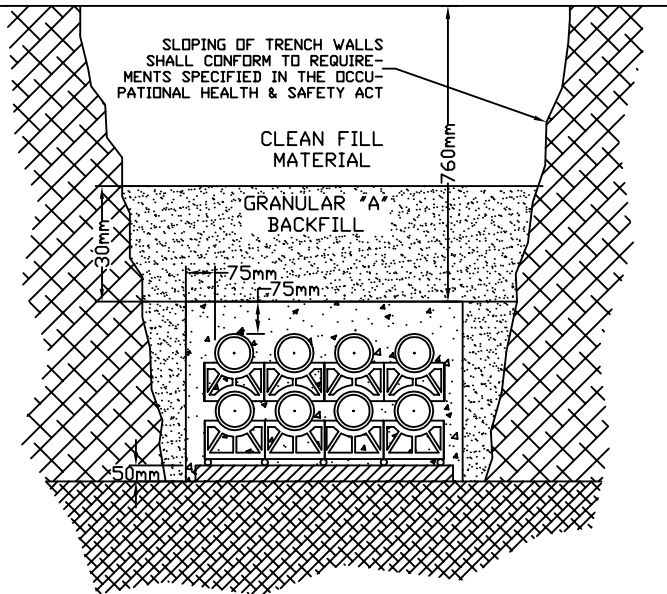
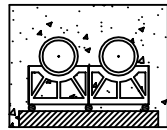


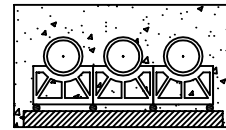
TYPICAL CONCRETE DUCT BANK SECTION VIEW



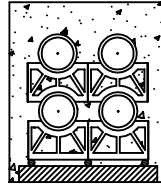
CONCRETE DUCT BANK SECTIONS



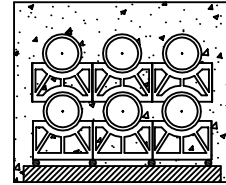
DETAIL A - 1x2



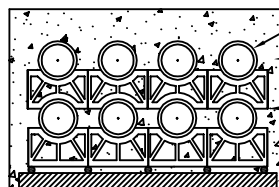
DETAIL B - 1x3



DETAIL C - 2x2



DETAIL D - 2x3



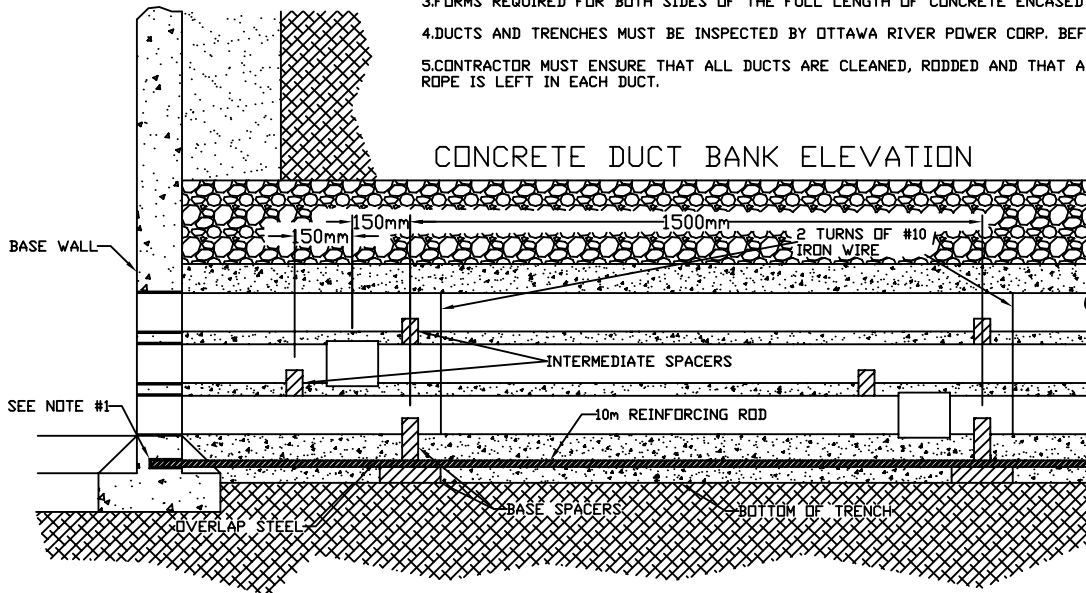
DETAIL E - 2x4

- 100mm TYPE DB2 PVC DUCT
CSA C22.2 No 211.1 APPROVED
- MIN. 20 MPA PEA
STONE CONCRETE
- OTTAWA RIVER POWER CORP. APPROVED
DUCT SPACERS, A MINIMUM GAP OF
25mm (1") BETWEEN DUCTS
- CONCRETE BASE SPACER
(50mm MIN.)

NOTES:

1. FOR DUCTS PLACED ON EXCAVATED GROUND AREA, USE REINFORCING RODS FOR THE FULL LENGTH OF CONCRETE ENCASED DUCTS. OVERLAP JOINTS BY 150mm ON BASE SPACERS AND TIE BOTH ENDS. DRILL AND DOVEL RODS 85mm INTO WALL(S) OF CONCRETE STRUCTURE.
2. DUCT SPACERS TO BE PLACED AT A MAXIMUM OF 1500mm AND WITHIN 150mm OF COUPLING.
3. FORMS REQUIRED FOR BOTH SIDES OF THE FULL LENGTH OF CONCRETE ENCASED DUCT STRUCTURE.
4. DUCTS AND TRENCHES MUST BE INSPECTED BY OTTAWA RIVER POWER CORP. BEFORE ANY CONCRETE IS POURED.
5. CONTRACTOR MUST ENSURE THAT ALL DUCTS ARE CLEANED, RODDED AND THAT A 6mm (1/4") POLYPROPYLENE ROPE IS LEFT IN EACH DUCT.

CONCRETE DUCT BANK ELEVATION



OTTAWA RIVER POWER CORPORATION

CONCRETE DUCT BANK INSTALLATION

DWN. ALEX REAVIE

APP. DOUG FEE P. ENG.

DATE MAY 29, 2006

DWG NO.

SDUG004

REV
0

SCALE 1:10

SHEET