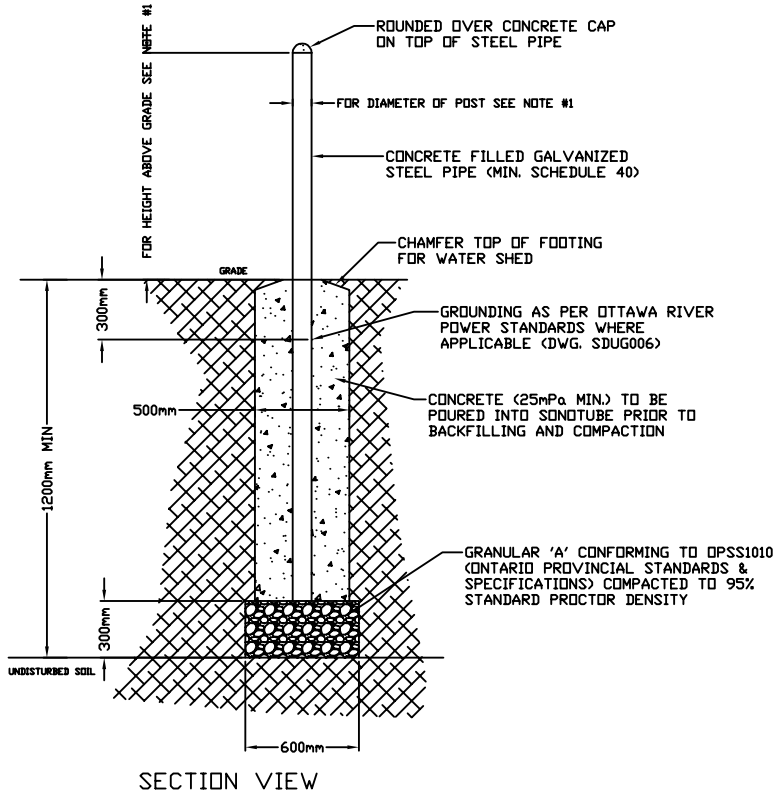
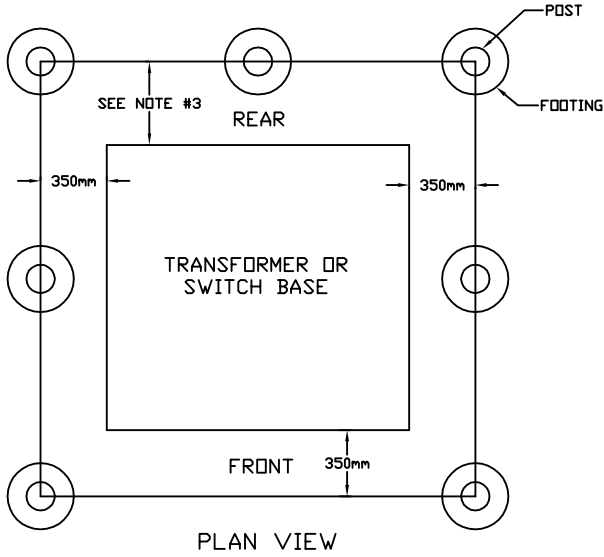


DESCRIPTION



SECTION VIEW



PLAN VIEW

NOTE

1. PROTECTIVE BOLLARD DIMENSIONS:  
 -FOR SINGLE PHASE TRANSFORMER BASE  
 HEIGHT 900mm DIAMETER 100mm  
 -FOR THREE PHASE TRANSFORMER BASE  
 HEIGHT 1200mm DIAMETER 150mm
2. FOUR BOLLARDS REQUIRED UNLESS OTHERWISE STATED IN DESIGN
3. REAR POST OFFSET FROM BASE:  
 -FOR SINGLE PHASE TRANSFORMER BASE  
 OFFSET 380mm  
 -FOR THREE PHASE TRANSFORMER BASE AND SWITCH  
 OFFSET 460mm



DWN. ALEX REAVIE

APP. DOUG FEE P. ENG.

DATE JUNE 9, 2006

OTTAWA RIVER POWER CORPORATION		
PROTECTIVE BOLLARD INSTALLATION TRANSFORMER AND SWITCH BASE		
DWG NO.	SDUG008	REV 0
SCALE 1:40	SHEET	